

# Vizi Wash Z19



Light Efficiency:

29 Lumen/Watt

Light Quality:

CRI: 69.1

Color Temperature:

6890 K

Output: 2419 lm

Peak: 23389 cd

Power: 84.2 W

PF: 0.99



Beam Angle

19.7°

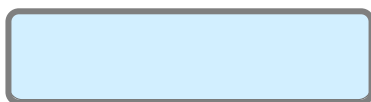
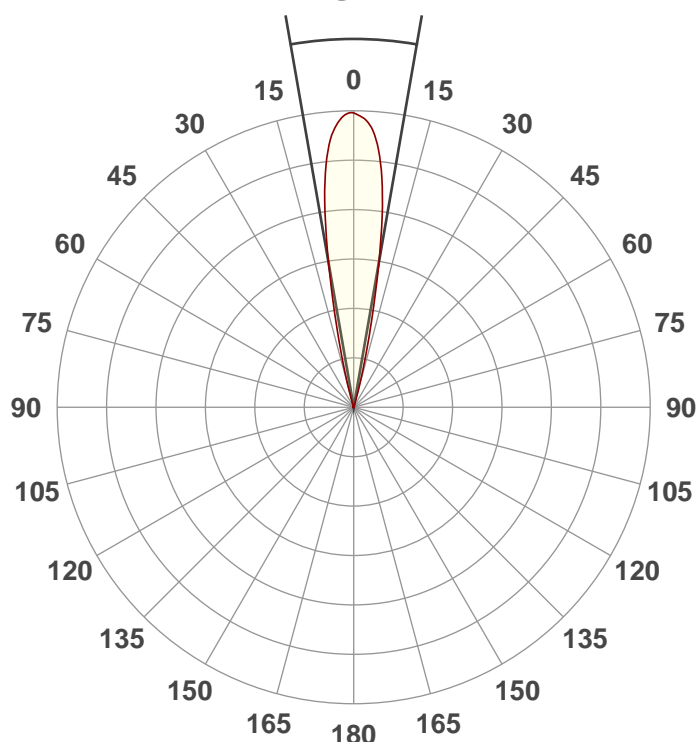
Test:

Zoom 50% White

Date:

8/29/2019

Note:



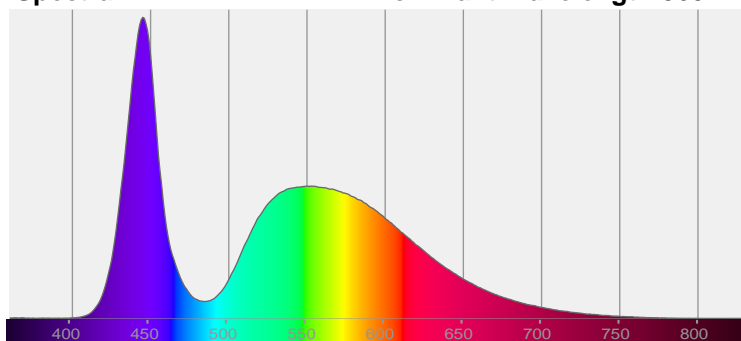
CIE 1931

x: 0.309

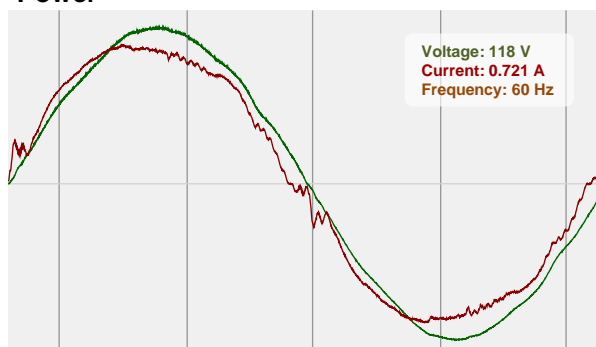
y: 0.312

Spectra

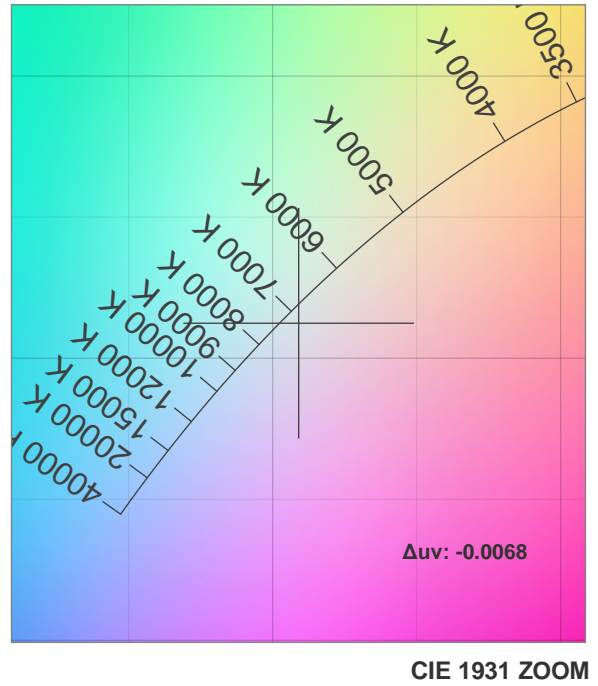
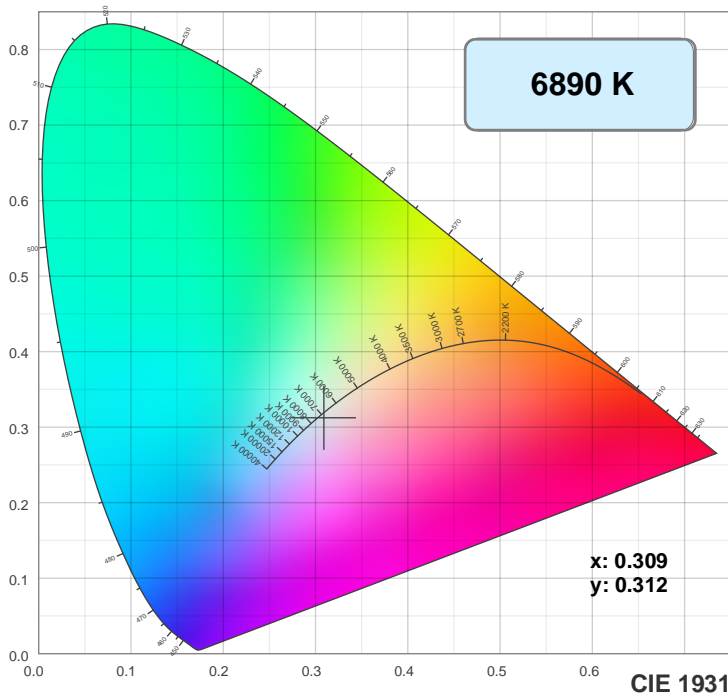
Dominant Wavelength: 360nm



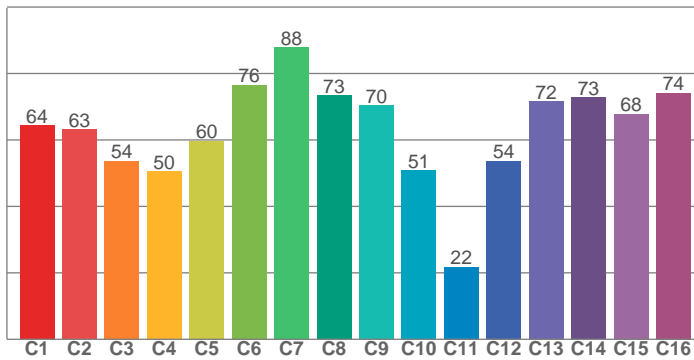
Power



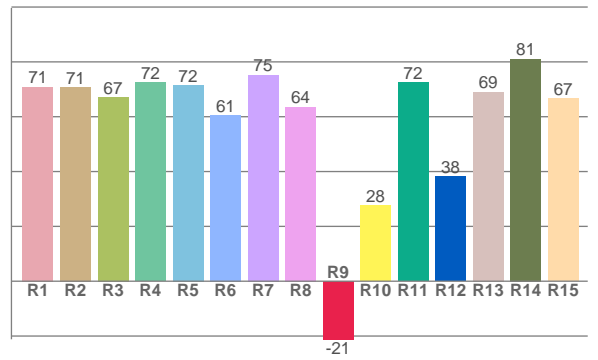
## Color Details



TM30: 62.7



CRI: 69.1 (R1-R8)



CRI R values, only R1-R8 are used to calculate final CRI value

R1	R2	R3	R4	R5	R6	R7	R8	R9	R10	R11	R12	R13	R14	R15
70.9	70.8	67.2	72.5	71.6	60.6	75.3	63.6	-21.2	27.7	72.5	38.1	69.1	81.1	66.7

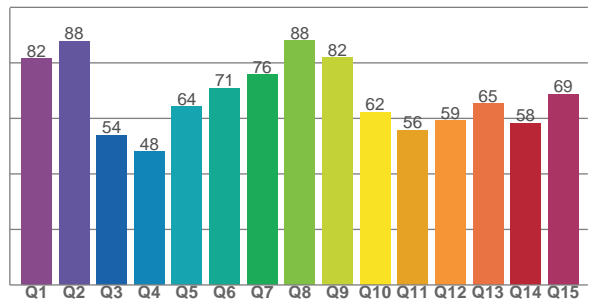
TM30 C values, 16 binned values out of total of 99 C values

C1	C2	C3	C4	C5	C6	C7	C8	C9	C10	C11	C12	C13	C14	C15	C16
64.4	63.2	53.7	50.5	59.7	76.5	87.9	73.3	70.3	50.7	21.8	53.7	71.7	72.8	67.8	74.2

CQS Q values

Q1	Q2	Q3	Q4	Q5	Q6	Q7	Q8	Q9	Q10	Q11	Q12	Q13	Q14	Q15
81.6	87.8	53.9	48.0	64.3	70.9	75.8	87.9	81.9	62.2	55.8	59.3	65.4	58.3	68.7

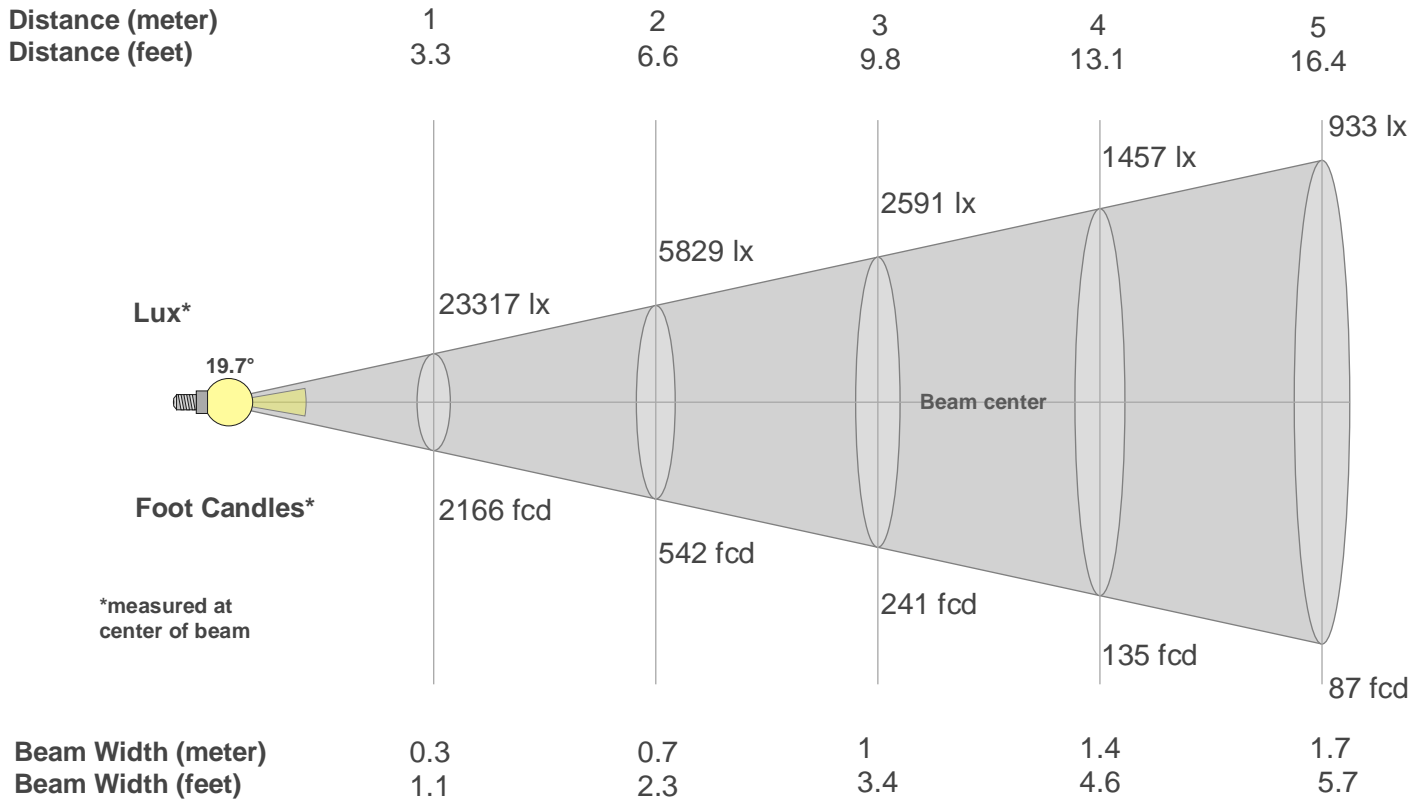
CQS: 65.9



## Color Parameters

Color Temperature	Color Rendering Index	Red Component	Color Fidelity	Color Gamut	Color Quality Scale	Color Coordinate CIE 1931	Color Coordinate CIE 1931	Color Coordinate	Color Coordinate	Color Deviation from Black Body
CCT	CRI	CRI R9	TM30 Rf	TM30 Rg	CQS	x	y	u	v	$\Delta uv$
6890 K	69.1	-21.2	62.7	96.0	65.9	0.309	0.312	0.202	0.306	-0.0068

## Beam Details



Beam Intensities from 1-20m

m	1	2	3	4	5	6	7	8	9	10	11	12	13	14	15	16	17	18	19	20
ft	3.3	6.6	9.8	13.1	16.4	19.7	23	26.2	29.5	32.8	36.1	39.4	42.7	45.9	49.2	52.5	55.8	59.1	62.3	65.6
lx	23317	5829	2591	1457	933	648	476	364	288	233	193	162	138	119	104	91	81	72	65	58
fcd	2166.2	541.5	240.7	135.4	86.6	60.2	44.2	33.8	26.7	21.7	17.9	15	12.8	11.1	9.6	8.5	7.5	6.7	6	5.4

Intensities in 0° C-plane

0°	1°	2°	3°	4°	5°	6°	7°	8°	9°	10°	11°	12°	13°	14°	15°	16°	17°	18°	19°
23.3K	23.3K	23.1K	22.7K	22.1K	21.3K	20.0K	18.4K	16.5K	14.0K	11.3K	8.7K	6.4K	4.5K	2.9K	1.8K	0.9K	0.3K	0.1K	0.0K
100%	100%	99%	97%	95%	91%	86%	79%	71%	60%	49%	37%	28%	19%	12%	8%	4%	1%	0%	0%

Intensities in 90° C-plane

0°	1°	2°	3°	4°	5°	6°	7°	8°	9°	10°	11°	12°	13°	14°	15°	16°	17°	18°	19°
23.3K	23.3K	23.1K	22.7K	22.1K	21.3K	20.0K	18.4K	16.5K	14.0K	11.3K	8.7K	6.4K	4.5K	2.9K	1.8K	0.9K	0.3K	0.1K	0.0K
100%	100%	99%	97%	95%	91%	86%	79%	71%	60%	49%	37%	28%	19%	12%	8%	4%	1%	0%	0%

Intensities in 180° C-plane

0°	1°	2°	3°	4°	5°	6°	7°	8°	9°	10°	11°	12°	13°	14°	15°	16°	17°	18°	19°
23.3K	23.2K	22.9K	22.5K	22.0K	21.0K	19.8K	18.3K	16.3K	14.0K	11.3K	8.8K	6.4K	4.4K	2.9K	1.7K	0.8K	0.3K	0.1K	0.0K
100%	99%	98%	97%	94%	90%	85%	79%	70%	60%	49%	38%	28%	19%	12%	7%	3%	1%	0%	0%

Intensities in 270° C-plane

0°	1°	2°	3°	4°	5°	6°	7°	8°	9°	10°	11°	12°	13°	14°	15°	16°	17°	18°	19°
23.3K	23.2K	22.9K	22.5K	22.0K	21.0K	19.8K	18.3K	16.3K	14.0K	11.3K	8.8K	6.4K	4.4K	2.9K	1.7K	0.8K	0.3K	0.1K	0.0K
100%	99%	98%	97%	94%	90%	85%	79%	70%	60%	49%	38%	28%	19%	12%	7%	3%	1%	0%	0%

Beam Angle 50%	Field Angle 10%	Cutoff Angle 2,5%	Intensity Ratio in 120° Cone	Intensity Ratio in 90° Cone
19.7°	28.9°	33°	99.9%	99.9%